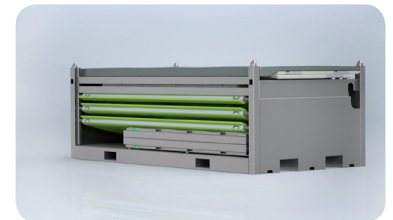
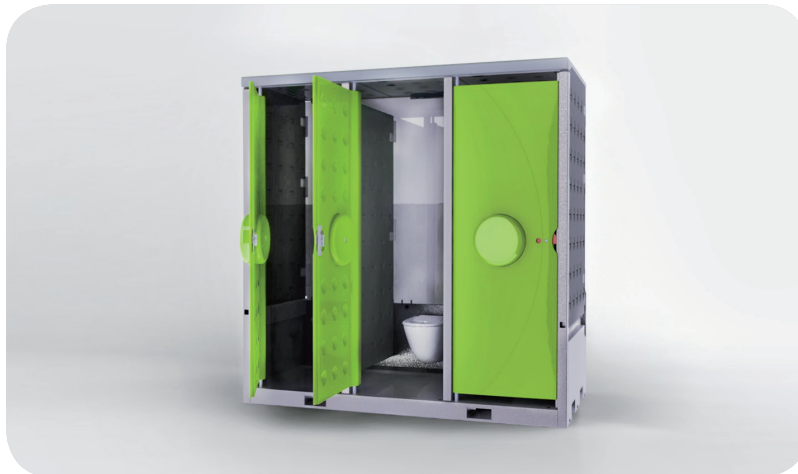




POP UP3 VACUUM TOILET MODULE



Advantages and features POP UP3 toilet unit:

- Innovative mobile sanitation equipment
- Equipped with vacuum technology
- 90% savings on water supply
- 90% savings on waste water
- 70% savings on transport
- Quick and easy setup, connection & cleanup
- Maximum hygienic standard in sanitation
- Closed drainage system
- Robust units
- Comfortable design
- LED lighting integrated
- Available in any color

Description	Specification
Article number	2000001
Name	POP UP3
Capacity	3 vacuum toilets
Available space per person	800 mm
Method of Placement	Modular system
Water connection	At Tech Unit Vacuum
Waste connection	At Tech Unit Vacuum
Electrical connection	At Tech Unit Vacuum
Measurements unfolded	2400*1200*2400 mm (l*w*h)
Measurements folded	2400*1200*800 mm (l*w*h)
Weight	690 kg
Materials: • Base Frame & Posts	Galvanised Steel
• Panels & Doors	LDPE
• Toilet	Porcelain
• Water System	Copper & Hose
• Waste System	PP



TECH UNIT VACUUM MODULE



Advantages and features Tech Unit:

- Frame size of the Tech Unit
- Capacity of the vacuum pumps
- Capacity water pressure pump;
- Control Cabinet suited for local requirements
- Water buffer tank;
- Hoses and connections for water supply and waste
- Tailor-made options for your requirements

Description	Specification
Article number	2001001
Name	Tech Unit Vacuum
Capacity	+/- 60 vacuum toilets
Method of Placement	Modular system
Water connection	¾ GK – 3.5 bar - 4 m³/hr.
Waste connection	Disposal approx. 400 mtr.
Electrical connection	Local voltage dependable
Measurements	2400*1200*2400 mm (l*w*h)
Weight	+/- 1100 kg
Connections from POPUP3 to Tech Unit:	
• Water supply	¾ GK hose
• Waste water	Camlock hoses
• LED Lighting	24V DC cables